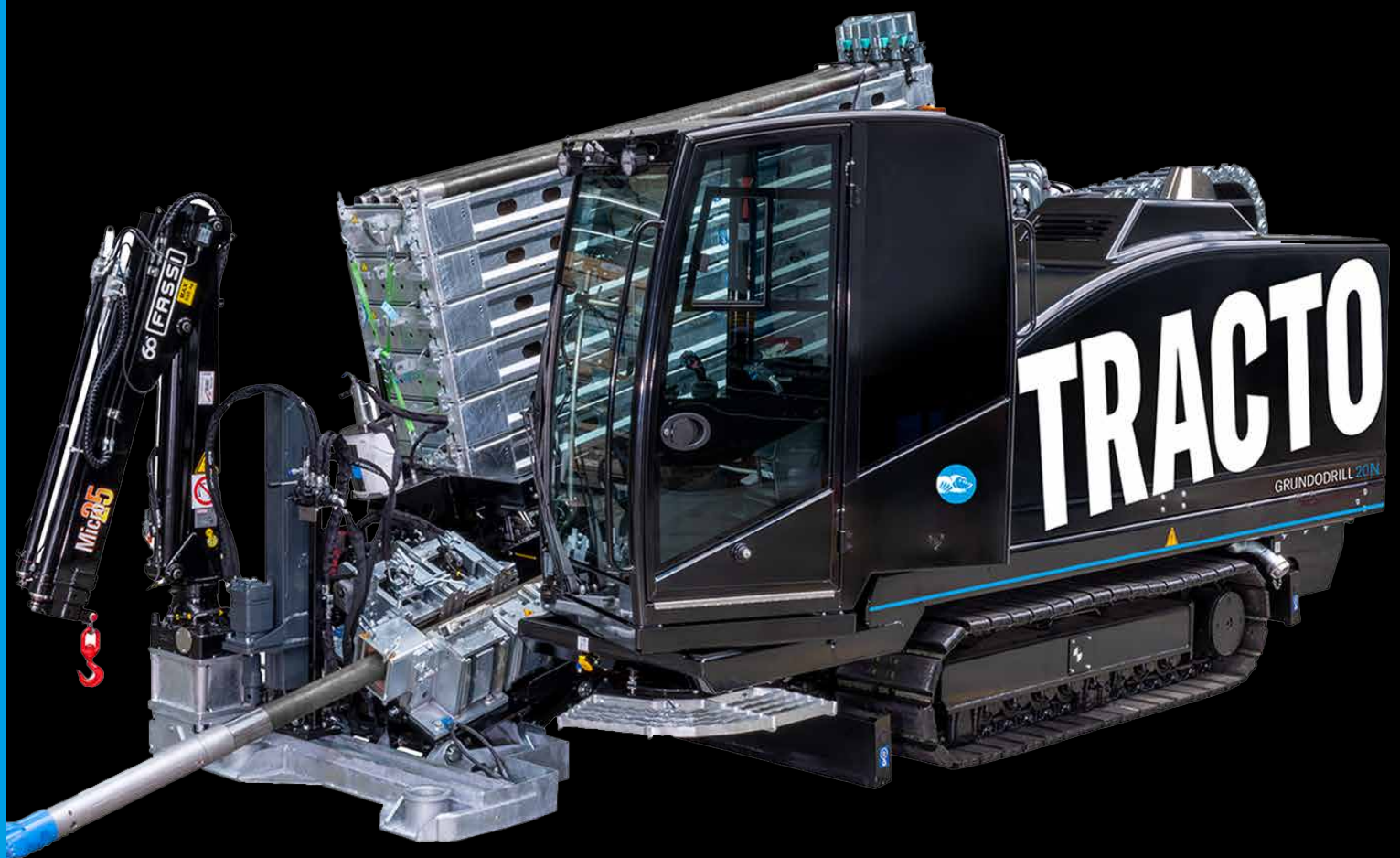


# TRACTO

All information  
about GRUNDODRILL  
[TRACTO.COM/EN/GRUNDODRILL](https://tracto.com/en/grundodrill)



GRUNDODRILL 20N  
HDD DRILLING RIG  
KEY PLAYER



**ADVANCED TRENCHLESS TECHNOLOGY**

# GRUNDODRILL 20N

## POWER FOR ALL REQUIREMENTS

### Key player

Powerful in all soils – that's the GRUNDODRILL 20N for directional drilling. With a thrust/pulling force of 200 kN and a continuously adjustable torque of 10,000 Nm, this jet drilling rig can be optimally adapted to difficult soil conditions and complex requirements in distribution network construction.

### Rods for any purpose

In addition to the standard version with 3 m long jet drill rods, the GRUNDODRILL 20N is also available as model 4.5 with 60 rods, each 4.5 m long. These allow even long jet bores to be carried out quickly in one session. The fully automatic rod handling system guarantees high productivity and minimises idle times, reducing the workload for the machine operator. The optional on-board crane facilitates rod handling.

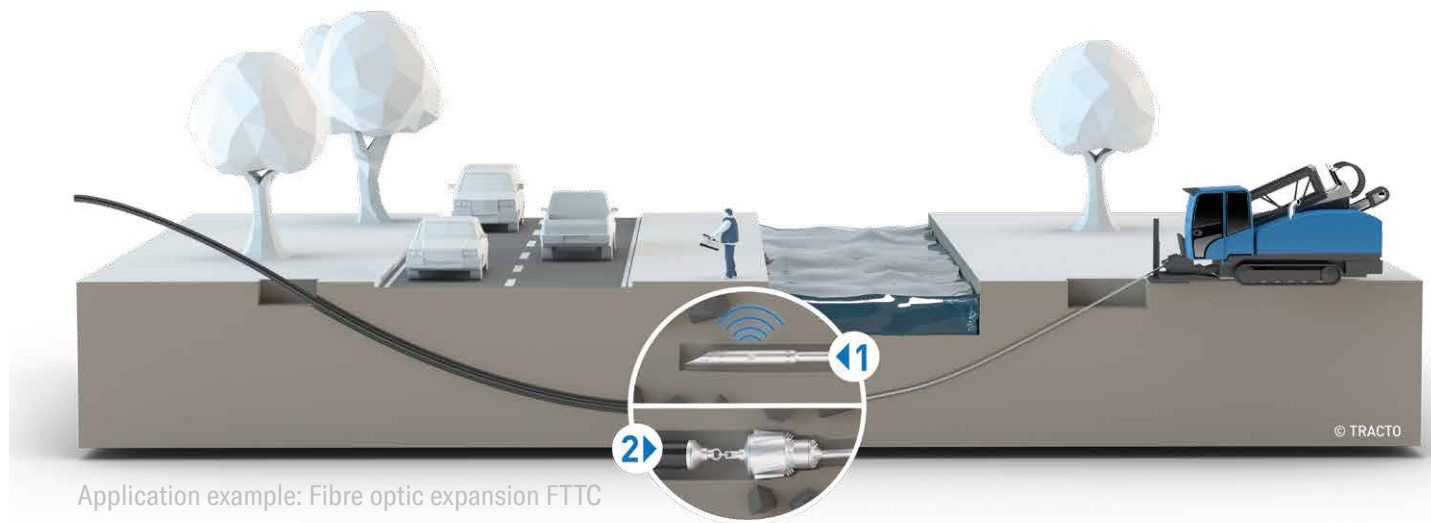
### Cable-guided drilling

As an option, the GRUNDODRILL 20N can be converted for cable-guided location when drilling in difficult terrain and greater depths.

### Concept for efficiency & comfort

The GRUNDODRILL 20N is a highly efficient drilling rig, not only because of its premium design. The entire machine concept is focused on performing all operations efficiently and offering the operator maximum ergonomics and operating comfort with all tasks. This is supported by various serial assistance systems such as bore automatics, digital tools like the BOREDATA app for automatic drill data logging, and last but not least, the well-equipped, rotatable comfort cabin with touchscreen PC, internet connection and plenty of storage space.

## APPLICATION



### INSTALLATION METHOD



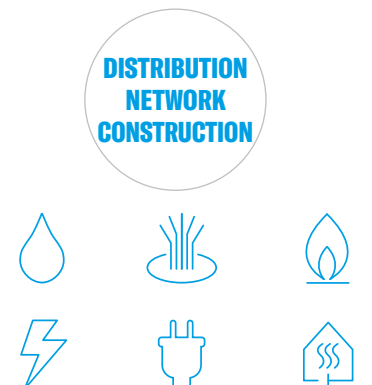
### DRILLING DIAMETER



### TYPE OF USE

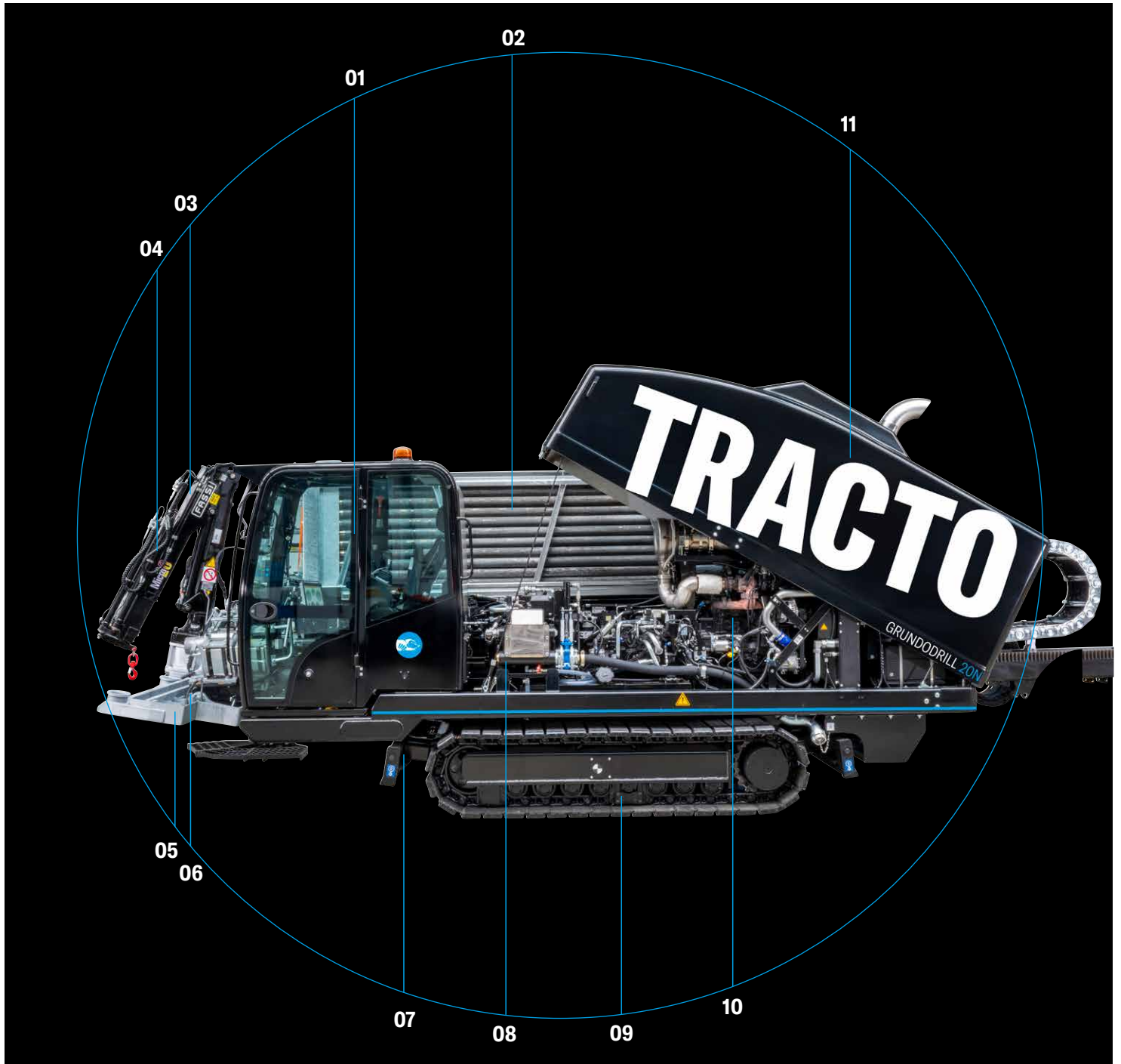


### APPLICATION RANGE



\* depending on soil

## OVERVIEW



**01 Comfort cabin** – hydraulically adjustable and vibration-damped, with more storage space, USB ports, removable floor mat, cup holder, powerful air-conditioning system

**02 Large rod magazine** with 270 m TD82 jet drill rods 4.5 m in combi box or 225 m TD73 or 210 m TD82 3 m in combi or stacking box on board

**03 Anchor drilling system** for even greater stability when drilling with optimised auger profile

**04 Remote-controlled loading crane** – optional for safe handling of stacking boxes, drill rods and accessories

**05 Collecting tray for Bentonite** – with Bentonite suction pump as an option

**06 High-pressure cleaner** in the anchor plate area – optional large HP cleaner with 15 m hose and drive via Bentonite pump

**07 Two stabilisers** – maximum stability, variable rig inclination for optimal penetration angle

**08 Recycling-friendly high-performance Bentonite pump** for high reaming speed and large expansion Ø

**09 Wide, rubberised steel crawler track unit** – extremely effective off-road and stable

**10 Powerful diesel engine** – low consumption, low emissions

**11 Large GRP hood** – easily accessible for service and maintenance

# COMFORT CONTROL CENTRE

## Full control

Comfortable control of all functions in drilling and driving mode via two multifunction joysticks. Different operating modes that can be freely selected by the machine operator:

### Manual mode:

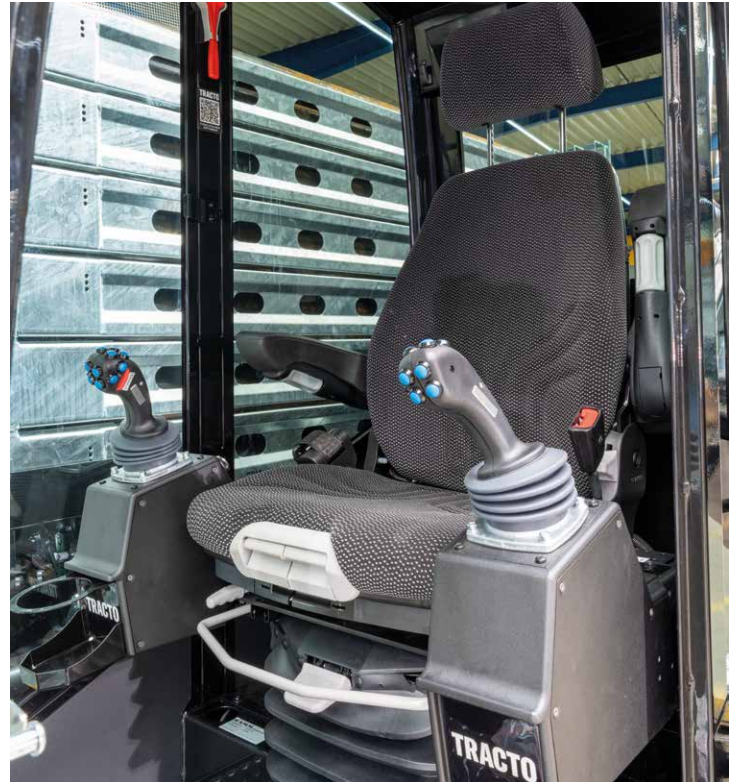
- All machine functions can be controlled by the machine operator

### Semi-automatic mode:

- Memory functions for rotation and thrust
- Automatic paddle mode
- Automatic rod exchange
- Automatic rod magazine reloading

### Fully automatic mode:

incl. automatic drilling, automatic rod exchange, rod lubrication and cleaning, etc.



## One display for everything

The integrated display lets you set all the drilling rig parameters in just a few taps:

- Panel PC with touchscreen and Internet connection
- High-resolution colour display
- Language selection
- Automatic collection of drilling data
- Remote diagnosis with telemetry data transmission
- LED lighting
- Radio with Bluetooth hands-free kit and USB port

## Ergonomic workstation

The top-of-the-range features of the rotatable comfort cabin impress with their ergonomic design and practical details for fatigue-free working in everyday use on the construction site.

- Grammer comfort seat XL with air suspension, automatic weight adjustment, seat heating, fabric cover
- Sun visors and tinted rear and side windows
- Panoramic glazing for optimal overview
- Drilling can also be carried out with the cabin not swung out in confined spaces
- USB ports, removable foot mat, cup holder and smartphone holder
- Heating and efficient air-conditioning system



# DRILLS AND DRILLS AND DRILLS

## Optimised rod system

The GRUNDODRILL 20N's fully automatic rod exchange system ensures minimal idle times, maximum productivity and considerable relief for the machine operator. The optional on-board crane makes it easier to handle the rods, as well as stacking boxes and other attachments. During normal operation, the drill rods can rotate inside the box, ensuring that they wear evenly.

In addition to the standard version with 3 m long drill rods, the GRUNDODRILL 20N is also available with 60 rods, each 4.5 m long, allowing even long jet bores to be completed in a single session. Compared to 3-metre rods, the reduced number of rod connections enables faster work in regular drilling mode and with cable-guided drilling.

Built for pros.  
Made for  
high standards.



## Full performance – economical from the very first metre

Like all GRUNDODRILL systems, the GRUNDODRILL 20N is designed for a wide range of applications, a long service life, low wear, high productivity and low consumption of resources and operating materials. This makes it particularly flexible and economical – from the first use.

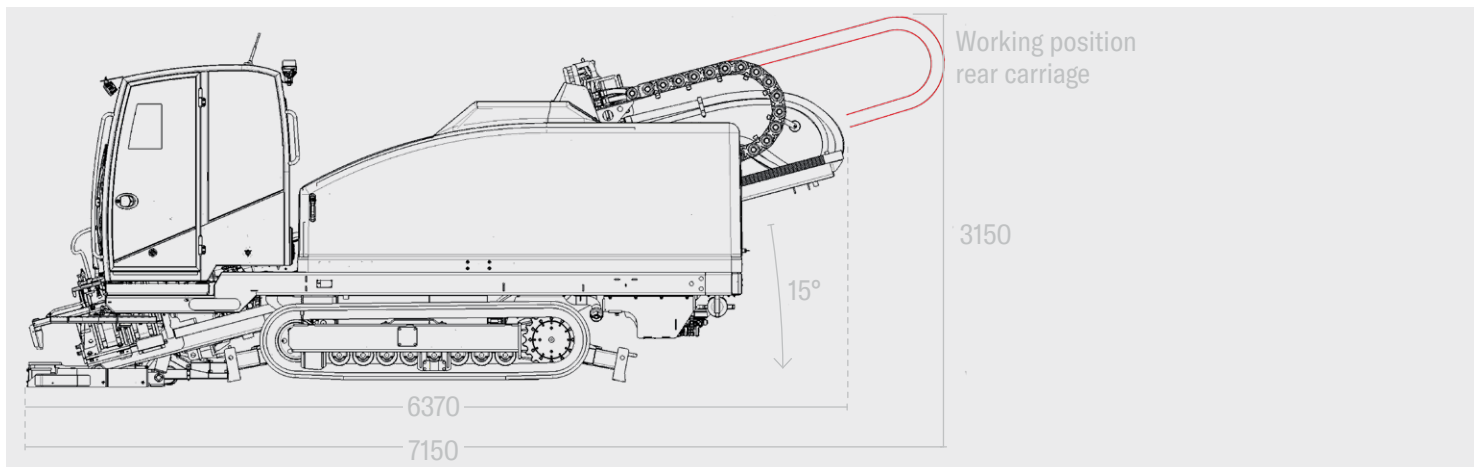
## FEATURES

# GRUNDODRILL 20N KEY PLAYER

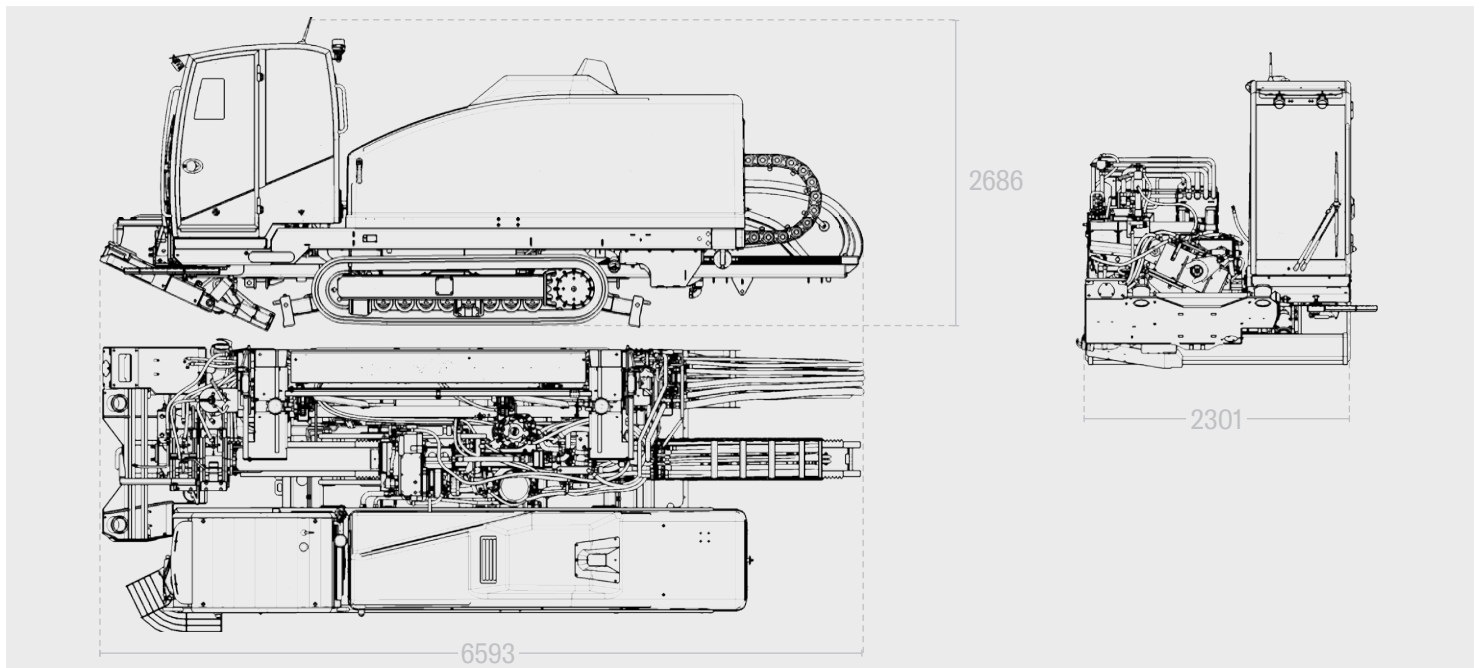
### FEATURES

- Standard rods TD73/TD82 or rods TD82 with a length of 4.5 m for jet drilling
- Cummins Stage V 123 kW engine
- Stepless adjustment of torque and rotational speed for maximum rotation and highest level of productivity at any rotational speed
- Fully automatic rod changing system for low idling time, maximum productivity and considerable relief for the machine operator
- Optional on-board crane for easy handling of the rods, stacking boxes and attachments
- Mud pump on anchor plate as an option
- Anchor drilling system with auger profile as an option
- Powerful Bentonite pump with 400 l/min delivery rate
- Spacious cabin, comfort seat, joysticks, panel PC with touch screen, air conditioning
- Radio remote control for manoeuvring the drilling rig
- High-pressure cleaner as standard, optional large HP cleaner with 15 m hose and drive via Bentonite pump
- Optional central lubrication for simplified maintenance
- Drilling data logging with BOREDATA app and data transfer via cloud or USB
- Free integration into COMMANDER fleet management app
- Convertible for cable-guided drilling

### WORKING POSITION (WITH 3-METRE RODS)



### TRANSPORT POSITION WORKING POSITION (WITH 3-METRE RODS)



## FEATURES



### TECHNICAL DATA

### TWIN DRIVE DRILL ROD

	TD73	TD82	TD82 4.5
Pulling force	180 kN	200 kN	200 kN
Thrust force	180 kN	200 kN	200 kN
Feed speed (load-free)	36 m/min	36 m/min	36 m/min
Max. torque	7.500 Nm	10.000 Nm	10.000 Nm
Max. spindle speed	200 rpm	180 rpm	180 rpm
HD Bentonite pump	400 l/min	400 l/min	400 l/min
Bentonite pressure	90 bar	90 bar	90 bar
Rod magazine capacity	225 m	210 m	270 m
Effective rod length	3.000 mm	3.000 mm	4.500 mm
Number of rods	75 pcs	70 pcs	60 pcs
Drill rod diameter	-	82 mm	82 mm
Drill rod diameter min. - max.	63 mm - 73 mm	-	-
Min. drilling radius	55 m	60 m	60 m
Length (transport position)	6.700 mm	6.700 mm	8.090 mm
Width (transport position)	2.350 mm	2.350 mm	2.350 mm
Height (transport position)	2.620 mm	2.620 mm	2.950 mm
Length (working position with swivelled cabin)	7.150 mm	7.150 mm	9.800 mm
Width (working position with swivelled cabin)	3.050 mm	3.050 mm	3.050 mm
Height (working position with swivelled cabin)	3.150 mm	3.150 mm	4.680 mm
Weight (combi-box   stacking box)	15.075   15.075 kg	15.075   14.585 kg	16.800 kg   --
Rod weight	42 kg	46 kg	65 kg
Drive engine/engine manufacturer	Cummins	Cummins	Cummins
Emissions standard	Stage V	Stage V	Stage V
Max. engine power	123 kW	123 kW	123 kW
Fuel tank capacity	180 l	180 l	180 l
AdBlue tank capacity	22 l	22 l	22 l
Fresh water tank capacity	105 l	105 l	105 l
Inclination angle	0 - 30°	0 - 30°	0 - 27°

\* depending on the soil conditions | Subject to change



# WELL EQUIPPED IS HALF WAY THERE

Drilling tools that are perfectly matched to the drilling rig guarantee optimum drilling progress in any type of soil. The robustness and durability of all parts is a matter of course.

## STANDARD DRILLING EQUIPMENT

---

Transmitter housing with drill head



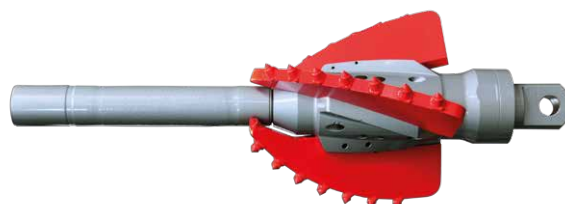
Medium soil reamer



Cone reamer



GRUNDREAM



## MIXING SYSTEMS

First-class mixing technology is an important component of successful steerable bores. Along with the drilling rig and drilling tools, the TRACTO's mixing technology forms an optimal solution for efficient work, even in difficult soil conditions.

High-performance mixing systems and pumps guarantee high drilling fluid performance. For drilling fluid quality precisely matched to the soil, professional measuring equipment and drilling fluid additives are available.

## RECYCLING

Drilling fluid recycling is sustainable and economical, especially with large volumes of fluid. The MRU250HE mobile mixing and recycling system has all the necessary equipment for the efficient treatment and reuse of drilling fluids on board.

Attend our in-house training courses to learn more about these subjects or request additional information on mixing systems, recycling technology and truck configuration.



MIXING SYSTEM MA07



MIXING SYSTEM MA010



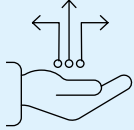
MIXING AND RECYCLING SYSTEM MRU250HE

## TRANSPORT

We are happy to assist with the configuration and selection of your truck and trailer. Please speak to your local sales representative for more information.

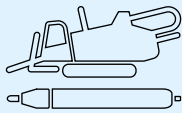
# FULL SERVICE FOR TRENCHLESS TECHNOLOGY

Whether its before, during or after the purchase, whether in person or online – we are always at your side with advice and support. Our wide-ranged service is specially tailored to the requirements of trenchless pipe installations, so you can concentrate fully on your core business.



## Digital Solutions

Our website offers you the whole world of trenchless technology in digital form. Find out more about our company, our products and their applications. Discover the digital tools for the HDD drilling technology and many other intelligent solutions. Always stay up to date by using the links to our social media channels. Or you can order machines, accessories and spare parts in our eSHOP – easy and conveniently via PC, smartphone or tablet.



## Nodig Product Specialists

You can truly rely on our product specialists for all technical questions regarding the function and application of our steerable and non-steerable NODIG-systems. With comprehensive knowledge in each of their special fields, you can be sure they will find the best solution for your trenchless projects and advise you competently on setting up your jobsite.



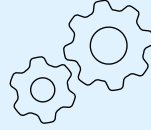
## Financing

We offer attractive financing solutions for new and used machines to our customers and sales partners through the TRACTO-TECHNIK Finance GmbH. Be it financing, hire purchase, various types of leasing or insurance: we provide extensive expert advice, individually and personally, in order to find the tailored solution for you. Discretion goes without saying.



## Training

Qualified training enables you to apply trenchless technology even more effectively and profitably. Our wide range of training courses for machine operators, construction professionals as well as planners and clients cover all aspects of NODIG technology, including special topics. Certified trainers also instruct you, in theory and practice according to your individual requirements, either at one of our numerous company locations, or directly on your own premises or online, independent of time and place.



## Specialised Civil Engineering Service (Application Technology)

The specialised civil engineering service for application technology provides support for all your trenchless construction sites. Our experts demonstrate the steerable and non-steerable NODIG technology live in practical use, show your drilling teams how to use it or actively assist with special projects.



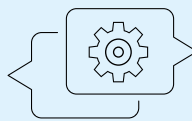
## Geoservice

Precise knowledge of the soil is the key to successful trenchless projects. Our Geoservice team provides you with this professional knowledge. Our expertise puts you in a position to master every type of soil. Based on geoscientific maps and existing construction files, we supply information on the soil, which will help you with calculations or supplements.



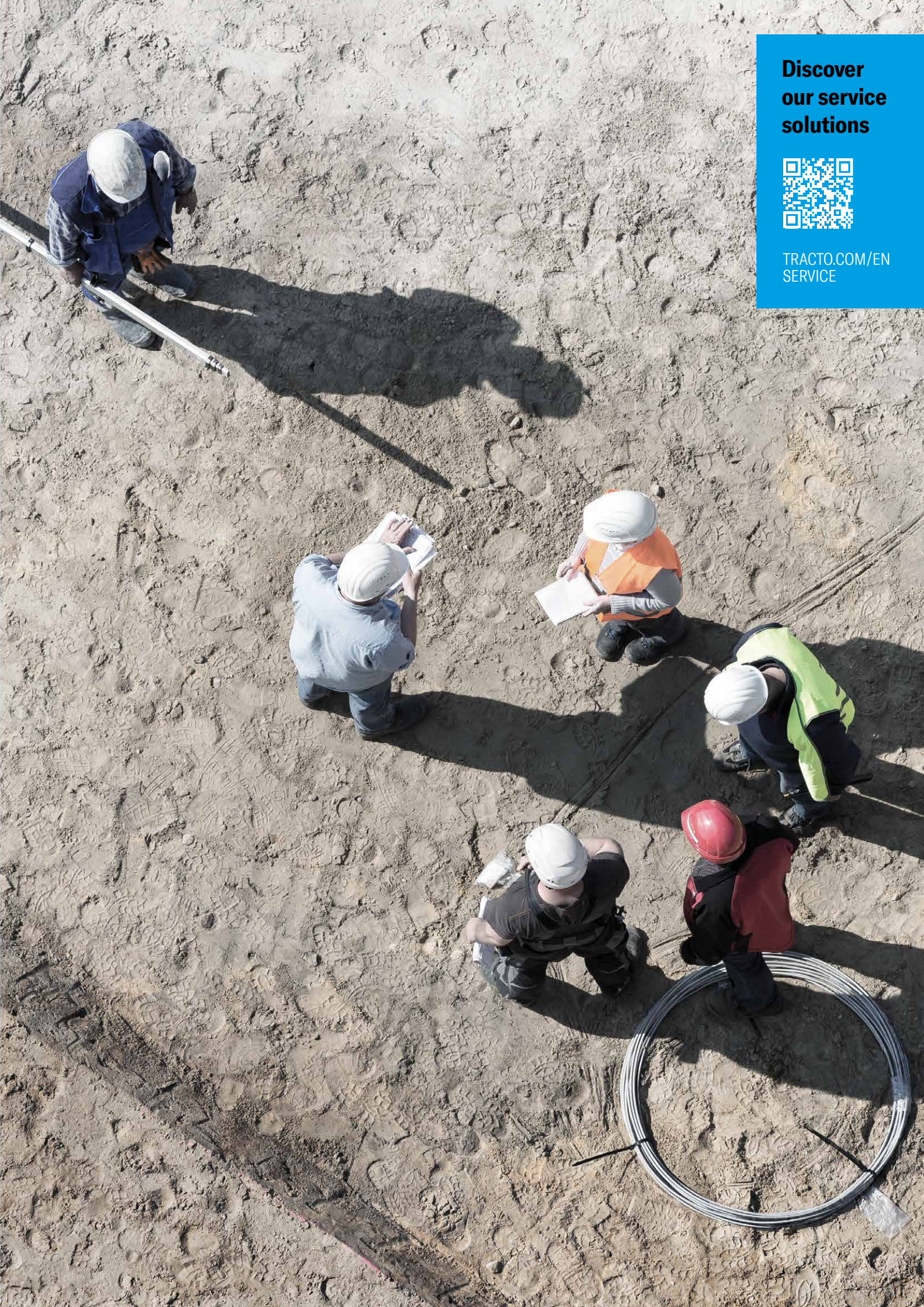
## Used Equipment

If you want to sell a used machine at an attractive price or are looking for the right equipment for your tasks, our full service for used NODIG machines will take the workload off your hands – from appraisal and price determination to professional repair and certification, through to achieving the best price for you via our used machine website with access to one of the world's largest construction machinery platforms.



## After Sales

Via our worldwide service network we are always there for you, even after the purchase. A total of five TRACTO plants and seven customer centres in Germany, as well as our worldwide sister companies and sales partners guarantee fast supply of spare parts and immediate availability. Our competent service staff offer fast assistance, to ensure you don't lose any time.



**Discover  
our service  
solutions**



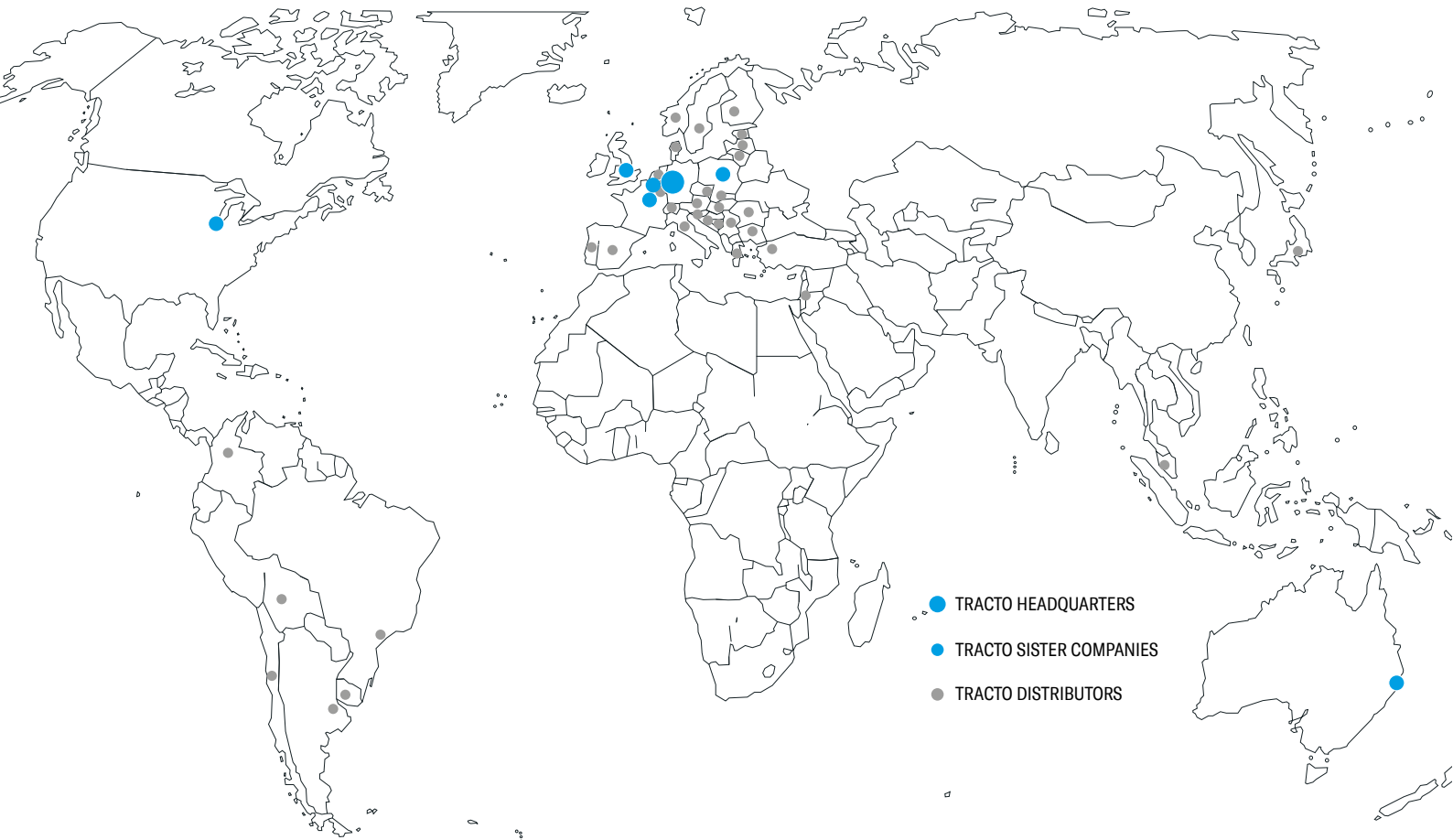
[TRACTO.COM/EN  
SERVICE](https://tracto.com/en/service)

# TRACTO-TECHNIK GMBH & CO. KG HEADQUARTERS

PAUL-SCHMIDT-STRASSE 2  
57368 LENNESTADT, GERMANY  
T +49 2723 808-0  
F +49 2723 808-180  
INFO@TRACTO.COM  
TRACTO.COM/DE



TRACTO.COM



**BENELUX**  
TRACTO-TECHNIK BENELUX  
MOESTOEMAATHEIDE 16A  
2260 WESTERLO  
T +32 498 66 60 74  
BENELUX@TRACTO.COM  
TRACTO.COM/BE

**UNITED KINGDOM**  
TRACTO-TECHNIK UK LTD  
10 WINDSOR ROAD  
BEDFORD MK 42 9SU  
T +44 1234 342566  
F +44 1234 352184  
INFO@TRACTO-TECHNIK.CO.UK  
TRACTO.COM/UK

**FRANCE**  
TRACTO-TECHNIK FRANCE S.A.R.L.  
1/3 RUE DE LA PRAIRIE  
F-77700 BAILLY ROMAINVILLIERS  
T +33 1 60 42 49 40  
F +33 1 60 42 49 43  
FR@TRACTO.COM  
TRACTO.COM/FR

**USA**  
TT TECHNOLOGIES INC.  
2020 EAST NEW YORK STREET  
AURORA, IL. 60502  
T +1 630 851 8200  
F +1 630 851 8299  
INFO@TTTECHNOLOGIES.COM  
TTTECHNOLOGIES.COM

**AUSTRALIA**  
TRACTO-TECHNIK AUSTRALIA PTY LTD.  
10 ALICIAJAY CIRCUIT  
LUSCOMBE, QLD 4207  
T +61 7 3420 5455  
AU@TRACTO.COM  
TRACTO.COM/AU

## TRACTO ADVANCED TRENCHLESS TECHNOLOGY

TRACTO PARTNER: